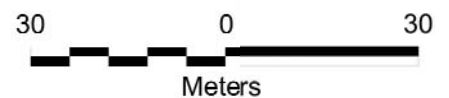




% INDIGENOUS NATIVE VEGETATION COVER

- | | | | |
|---|------------|---|-----------------------------------|
|  | Open Space |  | Bushland Reserves Boundary |
|  | 70-89 |  | Stormwater Pipes & Drainage Lines |
|  | 90 + |  | Walking Tracks |



Mosman
Municipal Council

DISCLAIMER

This map has been compiled from various sources and the publisher and/or contributors accept no responsibility for any injury, loss or damage arising from its use or error or omissions therein.

Copyright Mosman Municipal Council & LPMA 2011
AUSIMAGE - Orthorectified Imagery, Flown January 2009
Copyright Sinclair Knight and Merz

Drawn by J.L. Juns 2011
Q:\Jobs 2011\Bsiland_2011_2021_Middle_Harbour_E



**Bushland Contract 2011-2021
Middle Harbour East
Parriwi Park**



% INDIGENOUS NATIVE VEGETATION COVER

- | | | | |
|---|------------|---|-----------------------------------|
|  | Open Space |  | Bushland Reserves Boundary |
|  | 30-69 |  | Stormwater Pipes & Drainage Lines |
|  | 70-89 |  | Walking Tracks |



Mosman
Municipal Council

DISCLAIMER

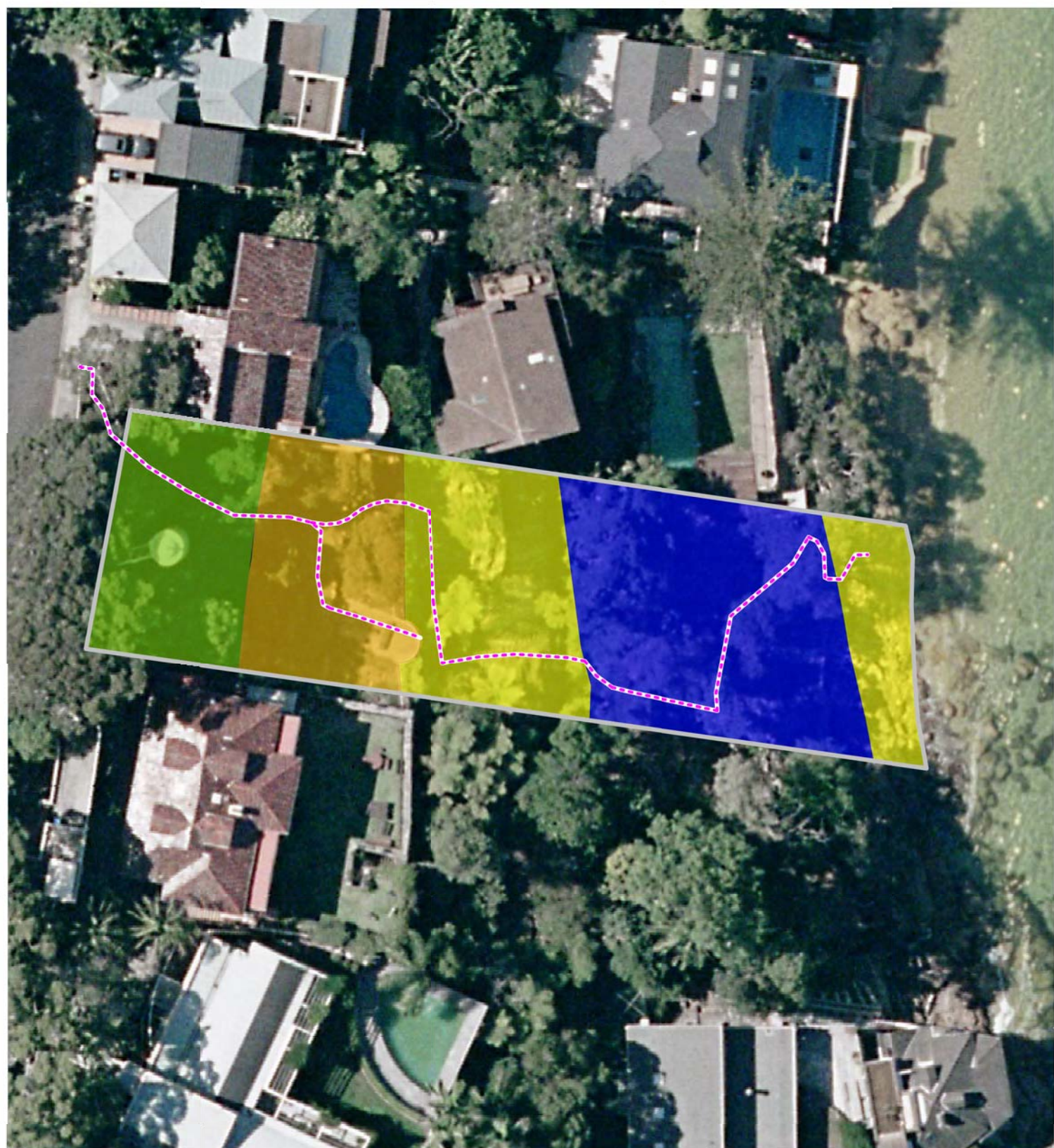
This map has been compiled from various sources and the publisher and/or contributors accept no responsibility for any injury, loss or damage arising from its use or error or omissions therein.

Copyright Mosman Municipal Council & LPMA 2011
AUSIMAGE - Orthorectified Imagery, Flown January 2009
Copyright Sinclair Knight and Merz

Drawn by JL Juns 2011
Q:\Jobs 2011\Bsiland_2011_2021_Middle_Harbour_E

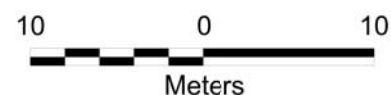


**Bushland Contract 2011-2021
Middle Harbour East
Parriwi Point**



% INDIGENOUS NATIVE VEGETATION COVER

- Open Space
- 30-69
- 70-89
- 90 +
- Bushland Reserves Boundary
- Walking Tracks



Mosman
Municipal Council

DISCLAIMER

This map has been compiled from various sources and the publisher and/or contributors accept no responsibility for any injury, loss or damage arising from its use or error or omissions therein.

Copyright Mosman Municipal Council & LPMA 2011
AUSIMAGE - Orthorectified Imagery, Flown January 2009
Copyright Sinclair Knight and Merz

Drawn by J.L. Juns 2011
Q:\Jobs 2011\Bsiland_2011_2021_Middle_Harbour_E



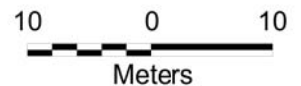
**Bushland Contract 2011-2021
Middle Harbour East
Parriwi Lighthouse**



% INDIGENOUS NATIVE VEGETATION COVER

- <30
- 30-69
- 70-89

- Bushland Reserves Boundary
- Stormwater Pipes & Drainage Lines
- Walking Tracks



Mosman
Municipal Council

DISCLAIMER

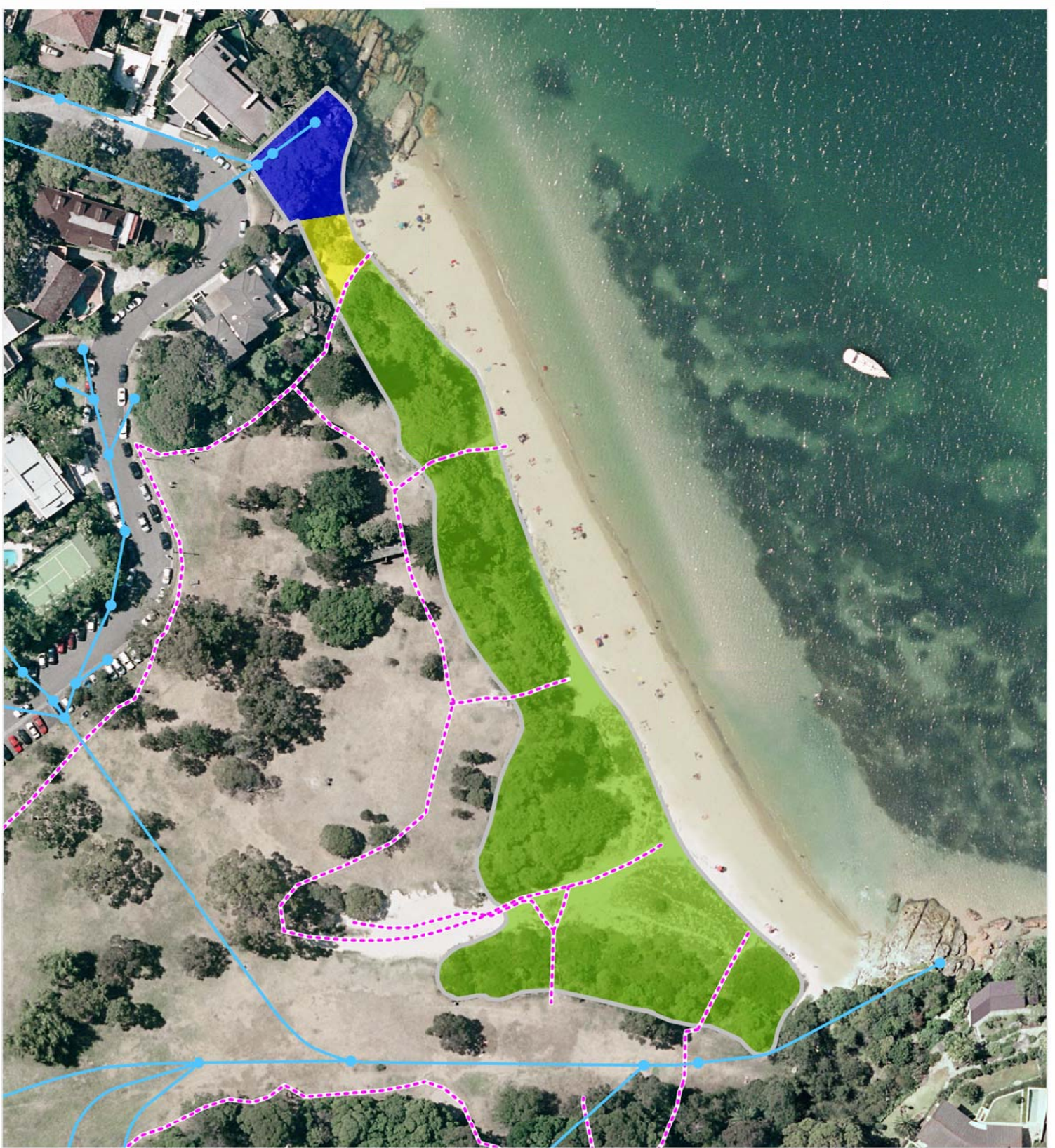
This map has been compiled from various sources and the publisher and/or contributors accept no responsibility for any injury, loss or damage arising from its use or error or omissions therein.

Copyright Mosman Municipal Council & LPMA 2011
 AUSIMAGE - Orthorectified Imagery, Flown January 2009
 Copyright Sinclair Knight and Merz

Drawn by J.L. Juns 2011
 Q:\Jobs 2011\Bsiland_2011_2021_Middle_Harbour_E



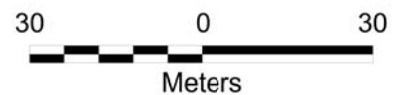
**Bushland Contract 2011-2021
 Middle Harbour East
 Rosherville Reserve**



% INDIGENOUS NATIVE VEGETATION COVER

- 30-69
- 70-89
- 90 +

- Bushland Reserves Boundary
- Stormwater Pipes & Drainage Lines
- Walking Tracks



Mosman
Municipal Council

DISCLAIMER

This map has been compiled from various sources and the publisher and/or contributors accept no responsibility for any injury, loss or damage arising from its use or error or omissions therein.

Copyright Mosman Municipal Council & LPMA 2011
 AUSIMAGE - Orthorectified Imagery, Flown January 2009
 Copyright Sinclair Knight and Merz

Drawn by J.L. Juns 2011
 Q:\Jobs 2011\Bsiland_2011_2021_Middle_Harbour_E

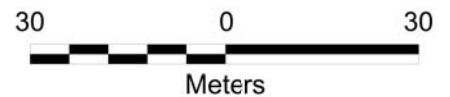


**Bushland Contract 2011-2021
 Middle Harbour East
 Chinamans Beach Dunes**



% INDIGENOUS NATIVE VEGETATION COVER

- | | |
|--|---|
|  Open Space |  90 + |
|  <30 |  Contract Boundary |
|  30-69 |  Stormwater Pipes & Drainage Lines |
|  70-89 |  Walking Tracks |



Mosman
Municipal Council

DISCLAIMER

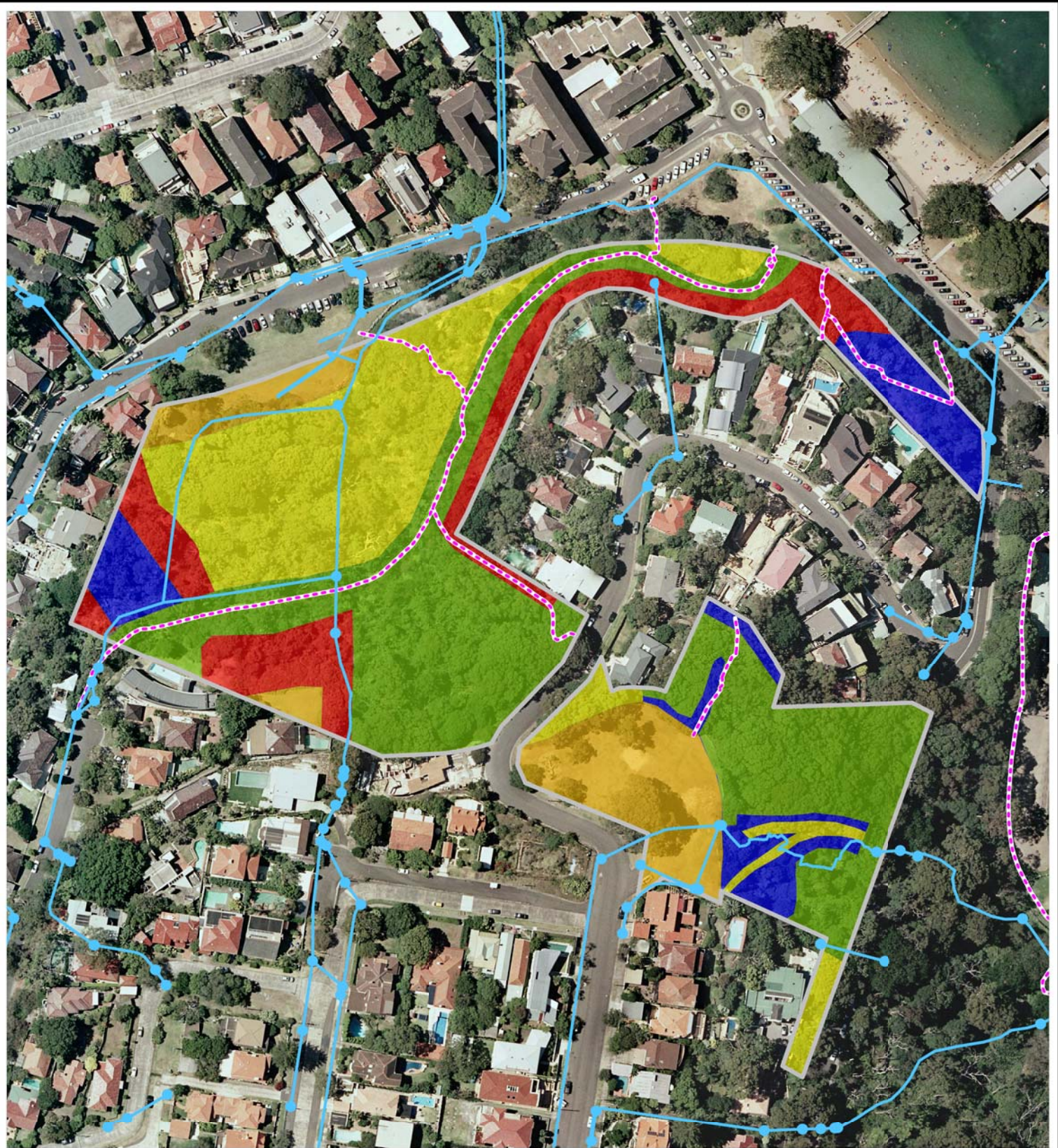
This map has been compiled from various sources and the publisher and/or contributors accept no responsibility for any injury, loss or damage arising from its use or error or omissions therein.

Copyright Mosman Municipal Council & LPMA 2011
AUSIMAGE - Orthorectified Imagery, Flown January 2009
Copyright Sinclair Knight and Merz

Drawn by J.L. Juns 2011
Q:\Jobs 2011\Bsiland_2011_2021_Middle_Harbour_E

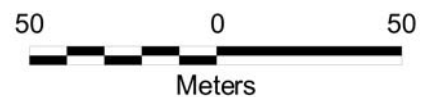


**Bushland Contract 2011-2021
Middle Harbour East
Wy-ar-gine Point**



% INDIGENOUS NATIVE VEGETATION COVER

- | | | | |
|---|------------|---|-----------------------------------|
|  | Open Space |  | 90 + |
|  | <30 |  | Bushland Reserves Boundary |
|  | 30-69 |  | Stormwater Pipes & Drainage Lines |
|  | 70-89 |  | Walking Tracks |



Mosman
Municipal Council

DISCLAIMER

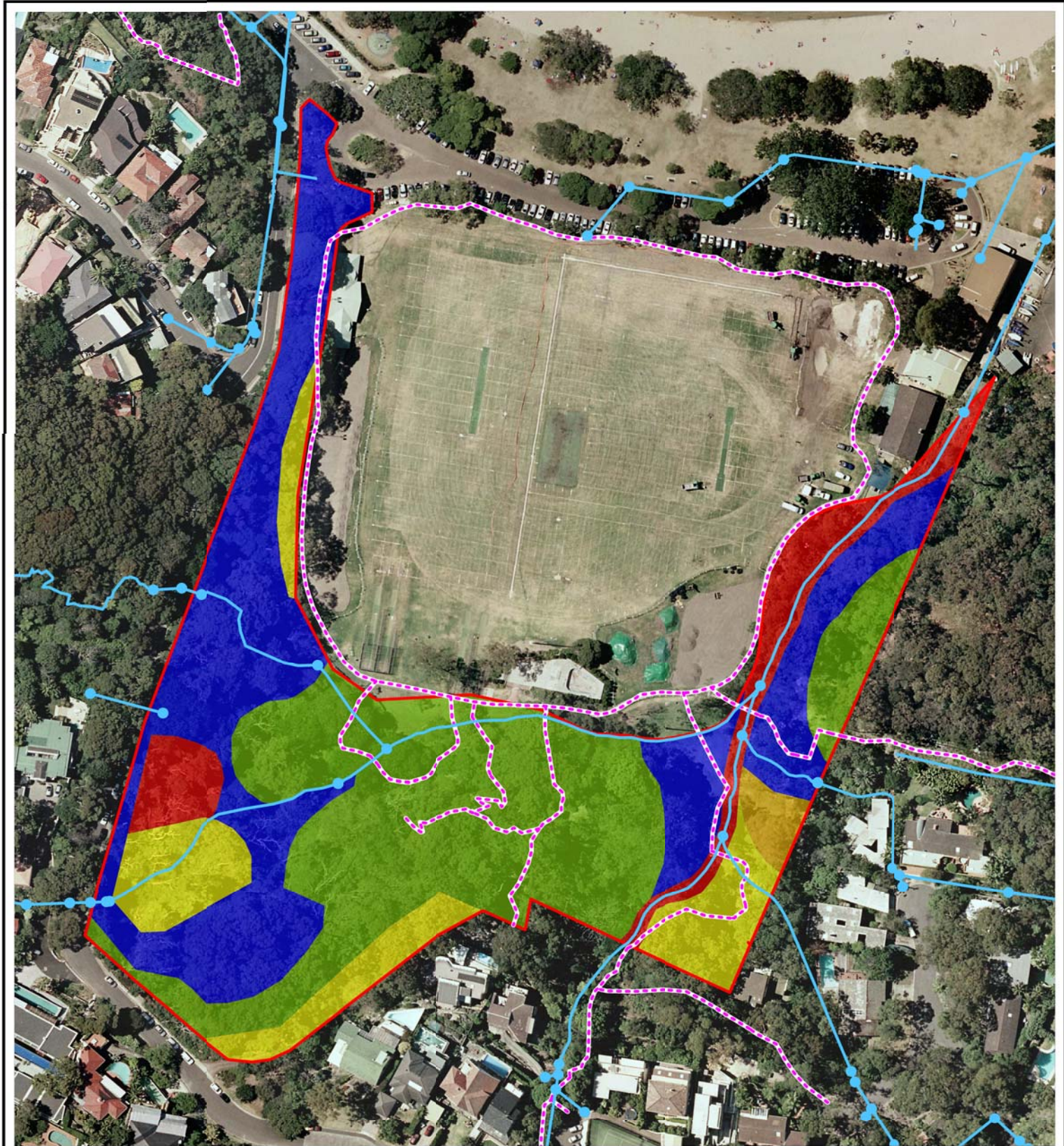
This map has been compiled from various sources and the publisher and/or contributors accept no responsibility for any injury, loss or damage arising from its use or error or omissions therein.

Copyright Mosman Municipal Council & LPMA 2011
AUSIMAGE - Orthorectified Imagery, Flown January 2009
Copyright Sinclair Knight and Merz

Drawn by JL Juns 2011
Q:\Jobs 2011\Bsiland_2011_2021_Middle_Harbour_E

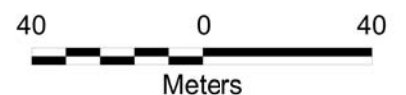


**Bushland Contract 2011-2021
Middle Harbour East
Lawry Plunkett**



% INDIGENOUS NATIVE VEGETATION COVER

- | | |
|--|---|
|  Open Space |  90 + |
|  <30 |  Contract Boundary |
|  30-69 |  Stormwater Pipes & Drainage Lines |
|  70-89 |  Walking Tracks |



Mosman
Municipal Council

DISCLAIMER

This map has been compiled from various sources and the publisher and/or contributors accept no responsibility for any injury, loss or damage arising from its use or error or omissions therein.

Copyright Mosman Municipal Council & LPMA 2011
AUSIMAGE - Orthorectified Imagery, Flown January 2009
Copyright Sinclair Knight and Merz

Drawn by J.L. Juns 2011
Q:\Jobs 2011\Bsiland_2011_2021_Middle_Harbour_E



**Bushland Contract 2011-2021
Middle Harbour East
Balmoral Park**